

# AL-75-55-HD+G

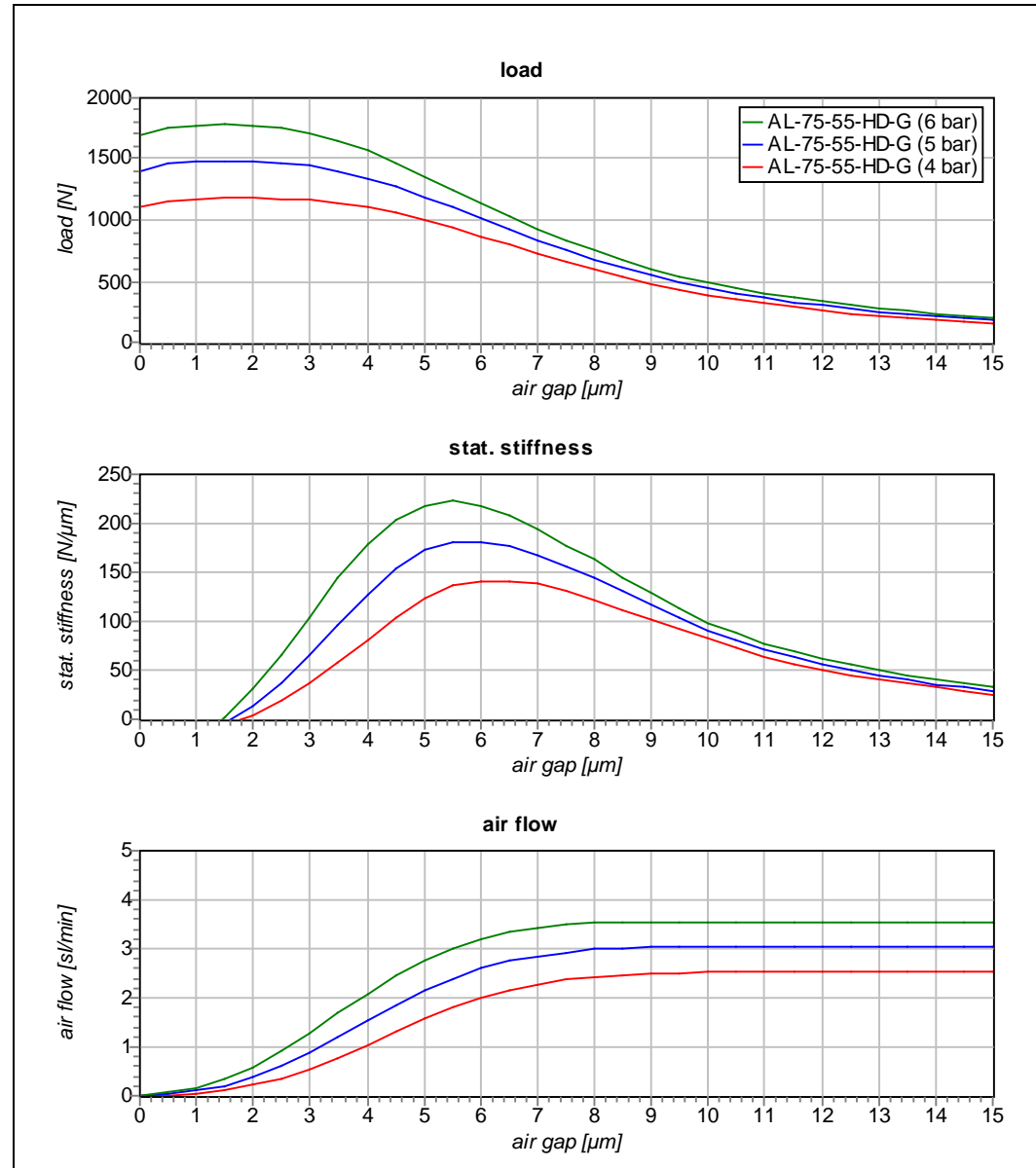


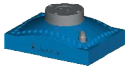
Air bearing data at	4 bar	5 bar	6 bar
recommended max. load	→ 900	1200	1500
recommended preload	→ 500	600	750
gap <sup>1</sup>	→ 9 μm	8.5 μm	8 μm
static stiffness <sup>1</sup>	→ 100 N/μm	130 N/μm	170 N/μm
max. static stiffness	→ 140 N/μm	170 N/μm	220 N/μm
tilt stiffness <sup>1,2</sup>	→ 0.7 N/μm	0.9 N/μm	1.1 N/μm
unrestricted airflow	→ 2.4 sl/min	3 sl/min	3.6 sl/min

specification	
weight	→ 160g
guiding surface	→ Ra 0.2
air quality	→ attachment
air pressure	→ max. 9 bar
accessories	→

<sup>1</sup> at recommended load  
<sup>2</sup> measured at the edge of the bearing

**application**  
 high dynamic





# AL-75-55-HD+G

